

MERCURY



Published Semi-Monthly as the Official Messenger of
Metropolitan College, Societas Rosicruciana in America.

Vol. 4

September 8,



MCMXIX.

No. 13

A Cordial Welcome

is extended to all members of Metropolitan on their return to the College for the Fall and Winter Terms. The Worshipful Adept and Officers express the hope that the past summer has been one of unusual happiness and profit to all, and anticipate the pleasure of giving a personal welcome to every "home-coming" member of the College.

The Third Annual Pilgrimage, S. . R. . X. . A. .

was made during the interim between July 8th., and July 21st., and the itinerary included Troy, Elizabethtown, Montreal, Three Rivers, P. Q., Quebec, Ste. Anne de Beaupre, Skowhegan Me, Gorham, Glen, and Manchester, N. H., Boston, Plymouth, and Sandwich, Mass.; Westerly, R. I.

While in Montreal, the party located the grave of Frater W. J. B. Macleod-Moore, formerly Supreme Magus of the Canadian Brotherhood and a Mason of prominence. Frater Moore entered the Higher Life at Prescott, Canada in 1890. His tombstone bears his Rosicrucian Mark, and is reproduced in this issue of Mercury.

While in Manchester, the grave of Frater S. C. Gould was visited and to the amazement of the Fraters, not even a wooden boundary post marks the lot, which is No. 1209. It is proposed to take up the matter of providing a suitable stone for the grave of one to whose initial labors we owe so much. Estimates were secured from a nearby granite cutter as to style of stone, and a special pamphlet will be issued during the coming Fall dealing with this matter.

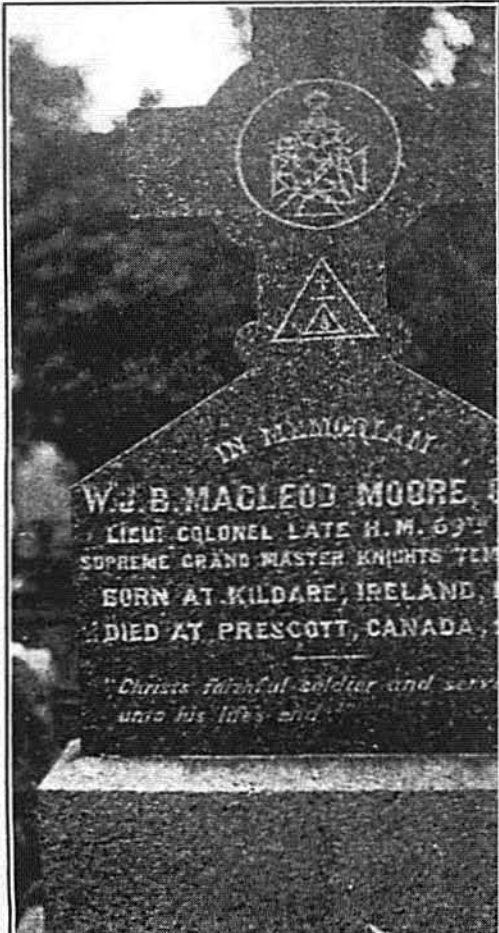


Photo by Paracelsus IX°.

On Sunday, July 13th., the party visited the Celebrated Shrine of Ste. Anne de Beaupre, 21 miles from Quebec, and had the good fortune to attend during the Episcopal Visitation of the Archbishop of the Province of Quebec. The Archbishop and the Bishop of Quebec are both shown in the vestments in the Procession in the grounds of the Basilica.

The M. . . (International) was celebrated Monday, July 14th., at St. Come, P. Q., by V. . . W. . . Fr. Reficio, IX°, at 11:25 A.M. (Sun time).

The Annual M. . . in A. . . was held on Mount Washington, at 7 A.M., Wednesday, July 16th., with V. . . W. . . Fr. Reficio, IX° as Celebrant.

A visit was made on July 17th., to the Malden (Everett) Mass. Cemetery and a Memorial Wreath laid on the grave of the late Charles Augustus Turner IX°, following a similar procedure last year. Ill. Fr. Turner it will be remembered was a Charter Member of Metropolitan, Worshipful Adept for two successive years, and an active member of the High Council.

Saturday, July 19th., a fraternal call was made upon Fr. Edward H. Brown, X°, at his home in Salem, Massachusetts. M. . . W. . . Fr. Brown is Grand Master of the Temple of the Rosy Cross, succeeding Frs. P. B. Randolph and F. B. Dowd. Fr. Brown was "caught in the act" of farming on his picturesque grounds among the Salem hills, and is shown with ye Editor on the veranda of his home.

A Sunday call was made on Mr. Thomas Bretton Kinraide at his summer home in Sandwich, Mass. The party was most hospitably received and observed with the greatest interest the experiments of this notable physicist, who is also an authority on the philosophy of the "Fourth Dimension."

The geological and other data accumulated for use in a forthcoming publication of the Brotherhood was both ample and interesting, especially the investigation of the giant boulders in Madison Cy., N. H., and Mattapoisett, Mass.

The party this year included Fraters Reficio, Paracelsus, Irenaeus and Khei and the total mileage was 1670. Next year the "Annual" will take the form of a geological and biological trip for the development of a College Museum which is now forming.

Societas Rosicruciana In America.

By Fr. K. X°.

Authorized Instruction in Rosicrucian Philosophy.

Number Five.

Reincarnation.

The Life Cycle, Consciousness, Purgatory, Panorama, Rebirth.

(Copyrighted 1919, by Societas Rosicruciana In America.)

- Falsity of the saying. "Womb to the Tomb."** It is a common saying that Life is simply the "Journey from the womb to the tomb." It is a less common saying that the "womb is the tomb of spirit." Neither statement is true. But it IS true that both the womb and the tomb ARE ENTRANCES to widely differing phases of Life,— Life of an intense degree of activity.
- Illogical Nature of the Orthodox Idea of Creation.** It is the generally accepted teaching of orthodox Christianity, that human life exists only from mortal birth to physical death, and that thereafter, man awaits a general judgment from the deeds of the interim of the life expression. God, who is All Good, creates by special act, humanity, His creatures. Although All Good, He finds that He has produced something that is not All Good, and yet He pronounced the works of His hands to be VERY Good. According to orthodox teaching, God then appeases His own wrath by incarnating Himself as His own Son, that His creatures may sacrifice Him to Himself as a propitiation for their sin in being imperfectly created by God Himself.
- Teaching of Christianity.** It is also the teaching of orthodox Christianity that each birth is in a way, a special creation; that is, a physical body is born into the world by natural process, but that God gives to each a soul, and that thus equipped, the being who has thus flashed into material expression out of an eternity past, to appear for a brief moment before disappearing for eternity to come, will be judged for the acts of that momentary fleeting expression for all future time, regardless of lack of opportunity, obvious inequalities, injustices, etc., and that the only help extended to mortals is through a vicarious system of salvation, with endless doctrinal shadings; some even going so far as to assert the predestination and election to grace or damnation, relieving man of individual responsibility and in practice relegating him to the moral status of the animal kingdom. And many Christians still believe that out of the billions of humans that have lived and shall live, only 144,000 are ultimately to be saved.
- Inequalities and Injustices.**
- Predestination.**
- 144,000.**
- Occult Science contradicts. What the Absolute cannot do.** Occult science contradicts all such theories, assertions and teachings, on one unassailable basis, which is, THAT THERE IS ONE THING THAT EVEN THE ABSOLUTE, GREAT AS IT IS, INCOMPREHENSIBLE AS IT IS, OMNISCIENT AS IT IS, CANNOT DO,— AND THAT IS, DESTROY LIFE.
- The All-Life a Constant.** All Life is an integral part of the ALL-LIFE and the ONE-LIFE, and no modicum of the All-Life or the Absolute can possibly fall or fail, because that would imply the death or failure of the Absolute itself, which is not only impossible but unthinkable. If the Absolute, as it surely is, is without beginning and without ending, boundless existence, ever-existent, then never by any possibility or circumstance can any part of its nature or substance cease to be. ALL is in the ALL, and the ALL is in ALL.
- Life continuous.** As the Absolute is a constant in time and space, so must every part of His Nature and Substance be likewise. Therefore "all life is continuous, evolutionary, in a constantly ascending scale of progression" (1). As the Absolute is constant, eternally existent, boundlessly existent, the Source and very being of ALL-LIFE, then it is impossible and unthinkable that the Absolute can take, stop, prevent, hinder, or inhibit ANY PART OF ITS OWN LIFE, FOR THAT WOULD BE PARAMOUNT TO THE ABSOLUTE COMMITTING COSMIC SUICIDE, which is inconceivable.
- Absolute cannot commit suicide.**
- No Life can be lost.** Therefore no human or other form of life can ever be lost, damned, or destroyed. The temporary vehicle may be changed from time to time, but the Life itself being a part of the ALL-LIFE, must go on unfolding, expanding and growing, or as we say evolving to higher and higher states of consciousness. The fact that All Life is a part of the ALL-LIFE and that no modicum of it can fall or ever be lost or destroyed is the esoteric truth concealed beneath the saying that is written, "and one of them (sparrows) shall not fall on the ground without your Father" (Matt. x-29).
- Womb and Tomb Entrances and Points of Departure.** With this knowledge, both the womb and the tomb take on more cheerful aspects. BOTH are to the occultists ENTRANCES TO NEW LIFE and POINTS of DEPARTURE from completed phases of temporary existence. We make our departure from the purely spiritual phase of existence through the womb, which becomes thereby the entrance to mortal life expression. We make our departure from mortal life through the tomb, which thereby becomes the entrance to the purely spiritual phase of life expression again.
- Cycle of Life.** This indicates a constantly recurring CYCLE OF LIFE, which we shall give in detail, as to the principal epochal events and conditions.
- The student learned in Instruction Number Three, that Physical birth does not constitute the complete birth of all the vehicles at the same time. We will now indicate the complete order:
- FROM THE WOMB:
- 1 Birth:—of the Physical Body. Entrance to Mortal Life.
 - 2 Birth:—of the Etheric Body at the age of Seven.
 - 3 Birth:—of the Astral Body at the age of Fourteen. Age of Puberty beginning of attraction to opposite sex and Propagative powers ripened.
 - 4 Birth:—of the Mind faculties, at the age of Twenty-One.

5 The next series of seven years brings the human to the age of *Twenty-eight*, at which time the individual is generally settled in what is destined to be its life-work, although sometimes conditions operate to force an earlier choice or a later one, but it will be found that Nature makes *Twenty-eight* a fair general average, and occupations selected prior to that age are usually subject to later change. In a way it is a turning point, for its double, 56 years, will be found by Insurance records to be very close to the average present age of humanity.

TOWARD THE TOMB:

Cycle of Life.
"Prime of
Life."

6 The sixth stage in the career of the individual brings him to the age of *Thirty-five*, at which time he is said to be "in the very prime of life," and should be glowing with health and vitality and capable of standing severe mental and physical strain. But it also marks the stage of "second growth" so-called, in which the notable features are a gradual decline of the reconstructive powers, and an increase of the mental powers, manifesting in calmer, more dispassionate judgment and conservatism.

Change of
Life in
BOTH Male
and Female.

7 The age of *Forty-two* marks a most important period for BOTH men and women. With a certain amount of latitude in both sexes due to climatic and previous health conditions, this is the approximate age known as the "Change of Life." It is commonly supposed that this pertains only to the female sex, but in reality it also applies to the males without, however, the attendance of so much visible phenomena. At this time, the ovaries of the female begin to cease the production of the Graafian vesicles bearing the ovum or egg, and this is also accompanied by the cessation gradually of the periodic menstrual flow. With the male, this is often a period of critical health conditions, which, if successfully passed mean excellent general health presumably for many years to come, but if passed with difficulty usually presage a comparatively shorter extent of the mortal life expression.

Katabolism
gains as-
cendancy.

8 This cycle of seven brings the individual to the age of *Forty-nine*, at which time one's mental powers should be at their prime of activity and productive capacity. From this time on however, the approach to the Tomb is more rapid. The flight of Time seems more rapid to the individual, and one begins to be conscious of the fact that one is nearer the termination of mortal expression than otherwise. The breaking down, destructive process or KATABOLISM, AS OPPOSED TO ANABOLISM or constructive metabolism is now in the ascendant. From now on, the duration of mortal expression will be largely in consonance with the sort of life the individual has previously led.

Living the
Life.

If that life has been one of dissipation, wasting of one's energies, such an individual has little to expect from Nature outraged, in the shape of clemency. If the individual has lived in conscious harmony with Nature's laws, then he can reasonably expect that the sunset of mortal life will be prolonged, and glorious in its approaching climax.

Astrological
influences.

9 Here the student who has engaged in the study of astrology may ask, "what about the directions in one's horoscope." It is manifestly impossible to insert in this Instruction a detailed exegesis of astrological delineations, but it may be said in general, that only the fool, simpleton, wastrel, ignorant or careless and indifferent person need be a slave to, or ruled by his stars. The stars DO indicate general epochal events that cannot be escaped, but the individual by an intelligent knowledge thereof, may mitigate or assist a given direction by co-operation with or preparation against it. "THE WISE MAN RULES HIS STARS," is NOT ruled by them. The horoscope indicates the general trend that may be expected if the native follows blindly or passively the indication, or allows himself to surrender unresistingly to their directions.

THE TOMB:—Death—

Death.

10 The departure from mortal expression after assimilation and contact of all the experience for which the individual has displayed a capacity in the stated expression, and in accord with the amount previously determined by the Lords of Destiny who are in charge of our immediate evolution. Death, or the laying aside of the Physical Body, is the exit from mortality and the entrance into a purely spiritual phase of existence.

Not a Cessa-
tion of Life.

Death is in no sense a cessation or discontinuance of life, which as stated, is continuous. It is the laying aside of the Physical Body in which the Katabolic processes and activities have triumphed over the constructive, and is therefore past its usefulness to the Ego and higher vehicles.

A Limited
Conscious-
ness ex-
changed for
an Amplified
one.
Three deaths.

Death should always be regarded by the Rosicrucian student as the *exchange of a limited state of consciousness for an amplified one*, the amplification depending entirely upon the use the individual has made of the opportunities afforded by the last mortal expression.

There are four deaths:

- a The death or DISCARD of the Physical Body,
- b The death or DISCARD of the Etheric Body,
- c The death or DISCARD of the Astral Body,
- d The death or DISCARD of the Mental Sheath.

**Higher Con-
sciousness.**

At each of these deaths, a higher state of consciousness is entered. THE JOURNEY FROM THE WOMB TO THE TOMB JUST DESCRIBED IS ACCOMPLISHED ENTIRELY IN THE CHEMICAL REGION OF THE PHYSICAL WORLD.

The death of the Physical Body is effected by the separation of the figure sixes of the Silver Cord, described in a previous Instruction. The rupture of the Silver Cord produces the actual death, and permits the Seed Atom to escape via the pneumogastric nerve and out through the suture between the occipital and parietal bones of the skull.

Panorama

Immediately after the process of death, the activities of the Soul, Ego, Mind, Astral and Etheric vehicles are carried on IN THE ETHERIC REGION OF THE PHYSICAL WORLD. There the Soul reviews all the acts of the immediate past life in panoramic display. This is possible through the Reflecting Ether of his Etheric Body, in which the Sub-conscious Memory functions in particular. This panoramic display is in reverse, that is, it begins with the acts and incidents immediately preceding decease, and so on back to birth.

**Duration of
Panorama.**

During the review of this panorama, the individual is largely in the position and status of a disinterested spectator, that is, he is without special attitudes of either interest or indifference, and the duration of this post mortem review is approximately the same length of time as that in which the individual could "stay awake" or remain in the waking state of consciousness during the mortal expression just relinquished.

Second death.

We have been considering the FIRST DEATH, the death of the Physical Body. The conclusion of the panorama just described is reached when the potential power of the Etheric Body, no longer acting in co-relation with the Physical Body, ceases. Then its structure begins to break down, disintegrate, the panorama is ended, AND THE SECOND DEATH takes place, the process of which, to the Ego, is much the same as the former first or physical death. The Ego with the Astral Body and Mental Sheath withdraws into the Astral World, leaving the Etheric Body to continue its disintegration. But on its withdrawal, the Ego has with it the Seed Atoms of both the Physical and Etheric Bodies, for use on its return journey to the next mortal expression.

**Astral World
Purgatory.**

The Astral World is of great importance both for the Ego retiring from mortal expression and the Ego returning to it. Here in the Astral World EVERY HUMAN BEING HAS TO GO THROUGH AN INDIVIDUAL PURGATORY. This purgative state or condition lasts until the individual has learned fully the illusion of desire. The length of time spent by the individual in the Astral World depends entirely upon the strength and tenacity of the desires cherished in the recent mortal expression and brought over into the Astral World. A "dead man" is not one whit wiser than a "live" one, immediately. By the act of Death he is BORN anew into the spiritual regions and has to learn to focus his faculties to his new environment. Hence the man of strong passions or love of gold is exactly the same immediately after death as before.

Illusion.

Here in the Astral World, which is the home of desire, the individual has to learn that all in the mortal life is illusion, the reflection or image of the real, and that what he most desired in mortality as pertaining to that estate is ephemeral and illusive, and that values cease when desire is realized or attained.

**Fires of Purga-
tory.**

The attainment of this purgation from desire is not altogether a comfortable or pleasant one to most individuals, for the common acceptances of ideas regarding the after-death state lead most humans to indulge their desires to the utmost while in mortal expression, on the assumption that one "will be a long time dead". Thus, until the individual learns in fullest truth the necessity of freeing himself from the bonds of desire, he will indulge the same desires after death as before; with this difference, that during mortal expression there was a possibility of gratifying the desire in a manner pleasing to the mortal senses, such is now impossible, even through the vicarious conditions of obsessing one still in human life. Thus the the internal fires burn all the more fiercely from the very fact that it is impossible to quench them through satiety, and they burn until they have nothing left to consume, or by which the process of combustion can be maintained. In other words, they remain lighted until desire burns itself out, unless developed intelligence and spiritual awakening has come earlier to the individual's relief.

PURGATORY MAY BE SAID TO BE THE PROCESS OF BECOMING CONSCIOUS OF THE FUTILITY OF UNNECESSARY EARTHLY DESIRES AND ACTIVITIES.

**Location of
Purgatory.**

This purgatorial state takes place in the First, Second and Third Sub-Regions of the Astral or Sixth World Region as defined in Instruction No. 1. These are the Sub-regions of Passion, Impressionability and Wishes, all of which, it will be seen by their very natures, have much to do with the element of Desire.

**No Old Age in
the Spiritual
Worlds. Old
become
Young, the
young ma-
ture to 33.**

Time passes rapidly in this Astral World, in fact about three times as rapidly as in the Physical World. But one is not conscious of it as when in the Physical Body, for then Old Age makes itself obvious. In the Astral World there is no Old Age. There is an Old Age of the Physical Body, but no Old Age of the Spiritual Body. So in the Spiritual Worlds, the average is the state corresponding to about 33 in the Physical. Children entering into the Spiritual Worlds mature to that approximation; while adults rejuvenate to the same status. The process of becoming young is the throwing off of the THOUGHT OF AGE and the consciousness of it, by the Spirit, in the Astral World.

**Stay in Purga-
tory Intro-
spection.**

Our stay in Purgatory can be shortened, not by any system of earthly "indulgence" but by our daily process of INTROSPECTION, which the Brotherhood requires of all its members. The effect of this process is to make us keenly aware of the true values concerned, and to re-establish equilibrium. The purpose of all Karma, which will be treated of later, is to make us assume our individual responsibilities to our fellow men. When we have done this THOROUGHLY we have learned the lesson involved, assumed and discharged the consequences of our actions, and the law of Compensation acts to enforce the payment of the utmost farthing. Man's OWN ACTIONS BECOME HIS JUDGES, AND FROM THEM THERE IS NO ESCAPE.

**Karma.
Man judged
by his own
actions.**

Conscience originates in Purgatory.

One great point of inestimable importance at this stage of progress is the fact that, as the result of the purgative process, Conscience is evolved. After desire has burned itself out, after the lessons have been learned, the individual may forget the isolated experiences, but the FEELING engendered by them will remain with him forever. Conscience began with each human being in the first after-death purgatorial career that occurred after his first human incarnation. We do not remember all the experiences in all our past lives, but the merit of them is etched or implanted in the Seed Atom to such an extent that in every succeeding life expression, the result of past pain comes to us as a warning against repetition of similar experiences or the entering upon new ones of a similar nature. The sense of approbation of one's course comes from the absence of consciousness of pain regarding a special incident. Thus CONSCIENCE IS THE MEMORY OF PAST PAIN, COSMICALLY RETAINED.

Conscience, the Memory of Past Pain.

First Heaven.

13 When the Purgatorial course has been completed, the individual makes his next important advance in the Spiritual Worlds. HE ENTERS THE FIRST HEAVEN. Bible students will recall that several heavens are therein referred to. This First Heaven occupies the THREE HIGHER SUB-REGIONS OF THE ASTRAL WORLD, which are, the Regions of Soul-Life, Soul-Light, and Soul-Power.

Soul growth.

From the names of these three divisions, it will be seen immediately that this is pre-eminently a state of soul-growth. Here again the panorama of life is reviewed, but this time not as a purgatorial state; instead, it is for the purpose of enabling the individual to extract from the incidents of the past life expression, all the RIGHT FEELING engendered and incubated by them. This, the individual builds into the Soul as the pabulum for Soul growth.

Paradise or Borderland.

Paradise or Borderland--These are terms used indiscriminately by Spiritualists and orthodox Christians in the varying doctrinal interpretations commonly given them. Occultly, it may be described as the Fourth Sub-Region, that of FEELING, or the NEUTRAL region. Here are found the beings who are of the negative or "lukewarm" type; individuals with no particular qualities that make for progress; neither good nor bad; whose spiritual senses have not yet awakened, and who consequently are destined to pass through the after death cycle more or less unconsciously until the forces awaken sufficiently to bring about a reversal of polarities in such a manner that an incentive to progress will be developed. The Initiate Dante brings this out in his "Inferno."

Purpose of First Heaven

As a summary, we will state that the purpose of Purgatory and the 1st Heaven is to TRANSMUTE THE ESSENCE OF PAIN INTO THE SOUL-PABULUM OF RIGHT FEELING.

Third Death and Second Heaven.

14 When this has been accomplished, and the illusion of desire is fully understood, the individual experiences the THIRD DEATH, leaves the Astral Body to disintegrate, AND ENTERS THE SECOND HEAVEN, taking with him, as in the first and second deaths, the forces or soul of the Seed Atom of the Astral Body. The discarded Astral Body is what so often is seen by undeveloped clairvoyants and "mediums" and mistaken for the discarnate entity itself. It has no intelligence of its own--this shell--but retains a semblance of intelligence gained by the process and phenomenon of induction. This pseudo-intelligence weakens and loses its potency as the shell disintegrates.

Second Heaven located in Division of Concrete Thought.

The Second Heaven is located in the 1st, 2nd, 3rd, and 4th. Sub-Regions of the Fifth World Region, or World of Thought, constituting the Division of Concrete Thought.

Second Heaven a Mental workshop.

In this Second Heaven, the Individual or Ego is surrounded only by the Mental Sheath, and therefore it will be seen that the conditions pertaining to this sphere are entirely mental. In the First Heaven the work done was for the ultimate benefit of the Soul and the furtherance of Soul Growth.

Second Heaven Source of RIGHT THOUGHT.

In the Second Heaven, the work is for the Mind and its development. As in the First Heaven Pain became transmuted into RIGHT FEELING, so here on the Mental plane, the Good in the past Life becomes transmuted into RIGHT THOUGHT, and the Individual or Ego enters into the Cosmic School for instruction to enable it to progress further in the line of accomplishing new work as a result of Free-will. Thus the Ego begins here to plan its next environment in the future earth life, and to construct its vehicles according to the purposes and requirements of that incarnation.

Work in the Second Heaven. Intense activity. Work upon Personal Conditions and Earthly Archetypes.

Here the artist, musician, sculptor, poet or writer learns to prepare and build organs of the requisite delicacy and sensitivity for his future requirements; here also all learn to work upon the archetypes of earthly conditions, even to the rearrangement of continents or seas, that the earth itself may be moulded to the requirements of man. These plans are made under the direction of lower celestial Hierarchies, and carried out by natural processes as humans term them, the processes of erosion, volcanic and seismic activity, meteorological conditions, etc.

Nature Spirits or Elementals assist.

These "natural processes" are also assisted by the intelligent activities of the "Nature Spirits" or "Rosicrucian Elementals" under their appropriate "Kings" or Hierarchs.

The Great Silence.

In the transition from the Astral World to the Second Heaven or Concrete Division of the World of Thought, the Ego at first enters and experiences what is termed THE GREAT SILENCE. This is due to the cessation from the activities operative in the Astral World which are notably those of Desire and its concomitant--Motion. Here, at first, the Ego is overpowered by the silence--comparatively. When this has continued for a space, affording the Ego an opportunity of effecting approachment with the new environment, then, little by little, the indescribable "music of the spheres," that can be cognized only in the mental state in mental regions, begins to enter in upon the consciousness, and the Ego realizes that at last it has returned to its true home, relative to the present day of manifestation.

Third Heaven.

15 When all the instruction afforded by the Second Heaven has been received and assimilated, the Ego enters the Third Heaven, which occupies the Division of Abstract Thought in the Thought World. In the First Heaven Pain was transmuted into Right feeling for the Soul; in the Second Heaven Good was transmuted into Right Thought for the Mind. Now, in the Third Heaven the

Fourth Death. Mental Essence of RIGHT THOUGHT, and the Soul Essence of RIGHT FEELING are transmuted into the SPIRITUAL BASIS OF RIGHT ACTS FOR THE FUTURE. This transmutation constitutes the Fourth Death, for after it the Ego discards the former mental sheath.

Ego naked in Third Heaven with four seed atoms. Now the Ego stands naked, as it were, retaining only the four seed atoms of the Physical, Etheric, Astral Bodies and Mental Sheath. This Third Heaven may be considered as the point of equilibrium in the Cycle of Life. Here the digestion and assimilation of all previous experience and its results creates in the Ego the desire for further opportunity, for additional experience "another chance to produce; to create; to contrive; to originate". Above all, the desire to APPLY the result of past experience to future efforts.

Where desire for rebirth begins. This desire to apply the results of past experience to new efforts IS THE BEGINNING AND ORIGIN OF THE DESIRE FOR NEW OR REBIRTH, AND THE FIRST STEP TOWARD IT.

This is one reason why it is so hard for unawakened mortals to understand the idea of reincarnation. They try to think from the mortal region of mentality. Reincarnation begins in the Third Heaven in the highest region of mentality.

Third Heaven end of Journey of Ego, and turning point. 16 The Third Heaven marks the limit of the Heaven-World life of the Ego of present earth-humanity, and is the great turning point in its spiritual career. When the desire for rebirth and additional experience is definitely formulated, the Ego at that moment begins its return journey to rebirth or a new mortal expression.

A mistake corrected. It is a common error among occult writers to describe the process of return of the Ego to a new birth or rebirth, as the "descent again into Matter". The process of return is not by any means a "descent", for that would imply the action of gravity, and the laws of gravitation as understood by physical science do not apply in the purely spiritual realms, as evidenced by the phenomenon of levitation, or the mediumsitic raising of inanimate objects or even human beings by spirit power in defiance of gravitational laws.

Gravity not operative in spirit world as we now understand it. It has been previously explained and must always be borne in mind, that the highest heaven may not be one whit removed from any given location in the physical world. The progress of the Ego in the spiritual dimensions, is one of indrawing. Rosicrucians are taught that we "came from the center" and "return again to the center". That is, the Ego comes into mortality from the innermost dimensions of being, crystallizing outwards. After death, and death by death it again indraws into the center or "highest" heaven.

Heaven is wherever the Ego may be. What really takes place is the setting into activity of the spiritual phase of the law of attraction. Thus the Ego in the Third Heaven, possessing only the four Seed Atoms, begins its progress toward rebirth by obedience to the law of Attraction which draws it into the Second Heaven again, where the Seed Atom of the Mental Sheath attracts to itself the materials for a new mental equipment in the new Mortal Expression to come. This Second Heaven, it will be remembered, is the Division of Concrete Thought.

Law of Attraction operates to draw Ego to Second Heaven where new Mental Sheath is formed. The journey toward rebirth is not undertaken, however, in ignorance of what the future may have in store for the Ego in the forth-coming mortal expression. All must be the result of intelligent, well directed activities. Thus, before the Ego leaves the Third Heaven, it reviews another panorama, this time the panorama of the mortal expression to come, in which the Ego is shown, by the Celestial Hierarchies who have this particular work in charge, the principal events it is proposed that the incarnating Ego shall accomplish during its next mortal experience. To this panorama, the Ego is permitted to add a definite amount of original work, in consonance with its inherent Free-Will, and thus to a degree permitted by the Hierarchies makes its own individual choice as to the environments in which it is to incarnate.

Second Panorama, this time of the future mortal expression. Knowing this, the occultist has no opportunity of reviling "Fate" or lamenting his life conditions, knowing that he definitely chose them before entering them; only from the spiritual worlds he was able to see beyond mortal limitations and KNOW the results that would ensue, and the value they would be to him. After incarnation, the cosmic memory is held in abeyance that it may not prevent the mortal from contacting each set of experiences to the utmost, or inhibiting him from entering upon experiences from which he might be tempted to turn, could his mortal senses know the complete path.

Panoramas show Cause and Effect. The two panoramas described in this instruction differentiate in this important respect: the first shows events from death back to birth. The second shows the incarnating Ego events from birth to death. THE 1st. PANORAMA SHOWS HOW EACH EVENT WAS THE RESULT OF A PREVIOUS CAUSE; THE 2nd. PANORAMA SHOWS HOW EACH FUTURE EVENT WILL BE THE CAUSE OF A SUBSEQUENT EFFECT.

No turning back. THIS PANORAMA ONCE REVIEWED, ORIGINAL IDEAS ADDED, AND THE PLAN DEFINITELY ACCEPTED, THERE IS NO TURNING BACK. As rebirth draws nearer timid souls often desire to stay the action, but the law is as inexorable as that of the Medes and Persians.

The Ego, as we have seen, is drawn into the 2nd. Heaven by the Law of Attraction. The selection of the requisite material for the new Mental Sheath is illustrative of one of the greatest phenomena known to science:—the selective power of given organisms.

Law of Selection operates It is well known that medicine taken into the mortal body will be selected or absorbed and appropriated by the particular organism therein for which it is intended. So too, the magnet selects only the iron or steel from a mass of mixed filings presented to it. In the same way, the Seed Atom of each vehicle of the Ego selects from the world or region to which it is co-related, only the material pertaining to its individual classification.

Two births. It is important to note, in following the process of the return of the Ego to rebirth, that it is clearly demonstrated that *real* birth BEGINS in the spiritual worlds, and the mere entrance of the physical body into material expression is not to be considered as the ACTUAL birth at all, and thus we have two events that may be generalized as births:—

- 1 The entrance of the Ego into the 2nd. Heaven.
- 2 The entrance into mundane life of the Physical.



Photo by Restcio IX°.

The Flame Press.

On and after October 1st, the FLAME PRESS will be in a position to supply all current occult literature, and books especially recommended by this Fraternity for the use and study of those seeking light along the Path. It will supply all classes of occult literature WORTH WHILE, Theosophical, Rosicrucian, Masonic, New Thought, etc., BUT POSITIVELY WILL NOT DISTRIBUTE THE TRASHY, PRURIENT SEX PUBLICATIONS with which the market is so prolific at present. It will deal only with CLEAN, WHOLESOME, OCCULT LITERATURE. Note the address.

Room 1517, Masonic Temple, 23rd Street and 6th Avenue. Convenient to West Side Subway, 6th Avenue Elevated, Hudson Tubes, 23rd Street Crosstown cars, connecting with all lines. KEEP THIS ADDRESS FOR YOUR FUTURE REFERENCE.

Special Notice.

It is especially requested that all queries regarding College matters, Degrees, Classes, Applications, Resignations, etc., be addressed to the W. A. at his home, 717 West 177th Street.

All matters relating to the general work of the Fraternity at large should be addressed to the Secretary General at the above address.

Owing to unusual pressure of work of the Fraternity, it is necessary that all appointments with the Imperator be made thru his Secretary, Soror Serena. Such appointments can be made thru her at the Regular Convocations, or by letter addressed TO THE SOCIETY (S. R. I. A., spelled out in full) at 712 West 180th Street. Applications for healing treatments should be made thru the Celebrant, Fr. Firmus.



Photo by Paracelsus IX°.

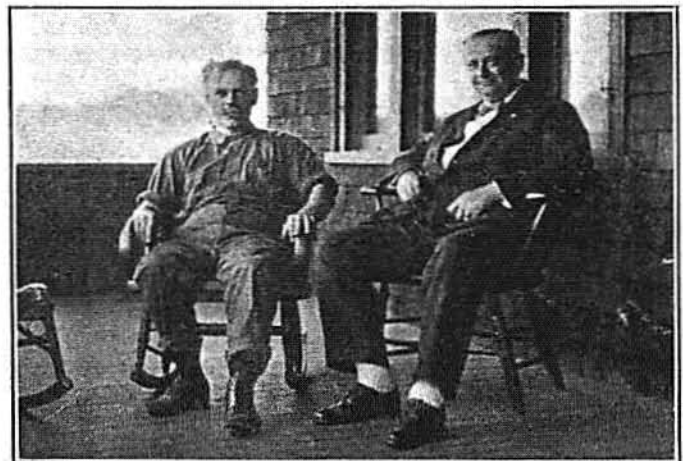


Photo by Paracelsus IX°.

Sayings of Elbert Hubbard, No. 9.

"The only people you can part, are those who do not belong together."

College Notes.

At the last Convocation, June 27th., Fraters Savonarola (Rev. C. B. of Passaic, N. J.) and Msche, (S. J. C., of Manchester, England) received the Degree of Neophyte, 0°-0°, in Ample Form. The Degree was conferred by the W. .A. . .

At the close of the Convocation the majority of the members present adjourned to a "Farewell Dinner" for which special tables had been reserved in the gallery of Pabst Harlem Cafe. This dinner was one of the most enjoyable ever held by members of Metropolitan and gave the active workers an opportunity of a social "get-together" before separating for the vacation season.

Soror Theudas (Mrs Carrie Gilman Edwards) whose reputation as a concert pianist and instructor in Music is well known, not only in New York but elsewhere, is returning to New York from Boston where she has made her home for the past year, and would be pleased to accept pupils and engagements for the coming season. Members who know of prospective beginners in pianoforte are requested to communicate with the W. .A. . . at once.

High Council Communication.

At a special meeting of the members of the H. .C. . held Friday evening, June 27th., the nomination of Soror Serena as Secretary to the Imperator, succeeding Soror Beatrix who departed for Bogota, South America, in May, was confirmed. At the same session, Fraters Saturninus of Morganton, N. C., (For Washington College) Justinian, of Atlanta, (For Phoenix College) and Apollos, of Metropolitan College were elected to receive the Eighth Degree on the forthcoming Autumnal Equinox.

Astrology.

The Astrological classes will resume work Tuesday evening, September 16th, at 8:00 P.M. PROMPTLY. In connection with this class let it clearly understood that the Instructor does not desire and will not accept as pupils, those whose interest may be expected to last only over two or three sessions. No pupils will be accepted who will not obligate themselves to maintain regular attendance and make earnest effort. No fees are charged in this class, and no pupil has any right to expect the Instructor to hold herself in readiness for the class work week by week, regardless of weather or possible social engagements, while the members regard it as optional whether they personally attend or not. The class is open to WORKERS, NOT DRONES OR CURIOSITY SEEKERS who join just "to see what it is like."

Directory.

The One Hundred and Sixth Stated Convocation of Metropolitan College
S. .R. .I. .A. ., will be held in the Adytum, 310 Lenox Avenue

Between 125th. and 126th. Streets, opposite 125th. Street station, Lenox Ave. Subway.

Friday Evening, September 12, 1919, at 8.00 P. M. precisely

Work:

Neophytes' Class Instructor Rt. Wor. Fr. Reficio IX°
Elementary Rosicrucian Philosophy, No. 5,
Subject: "Re-Incarnation."

Elementary Hermetic Class.....Instructor, Rt. Wor. Fr. Paracelsus IX°
Elementary Hermetic Instruction, No. 8,
Subject: "The Hermetic Principle of Polarity."

Senior Hermetic Class.Instructor, Fr. K.
Senior Hermetic Instruction, No. 4,
Subject: "Confirmatio."

Astrological Class.

Sr. Progressia 9°-2°.
1st, 3rd and 5th Tuesdays. 712 West 180th Street.